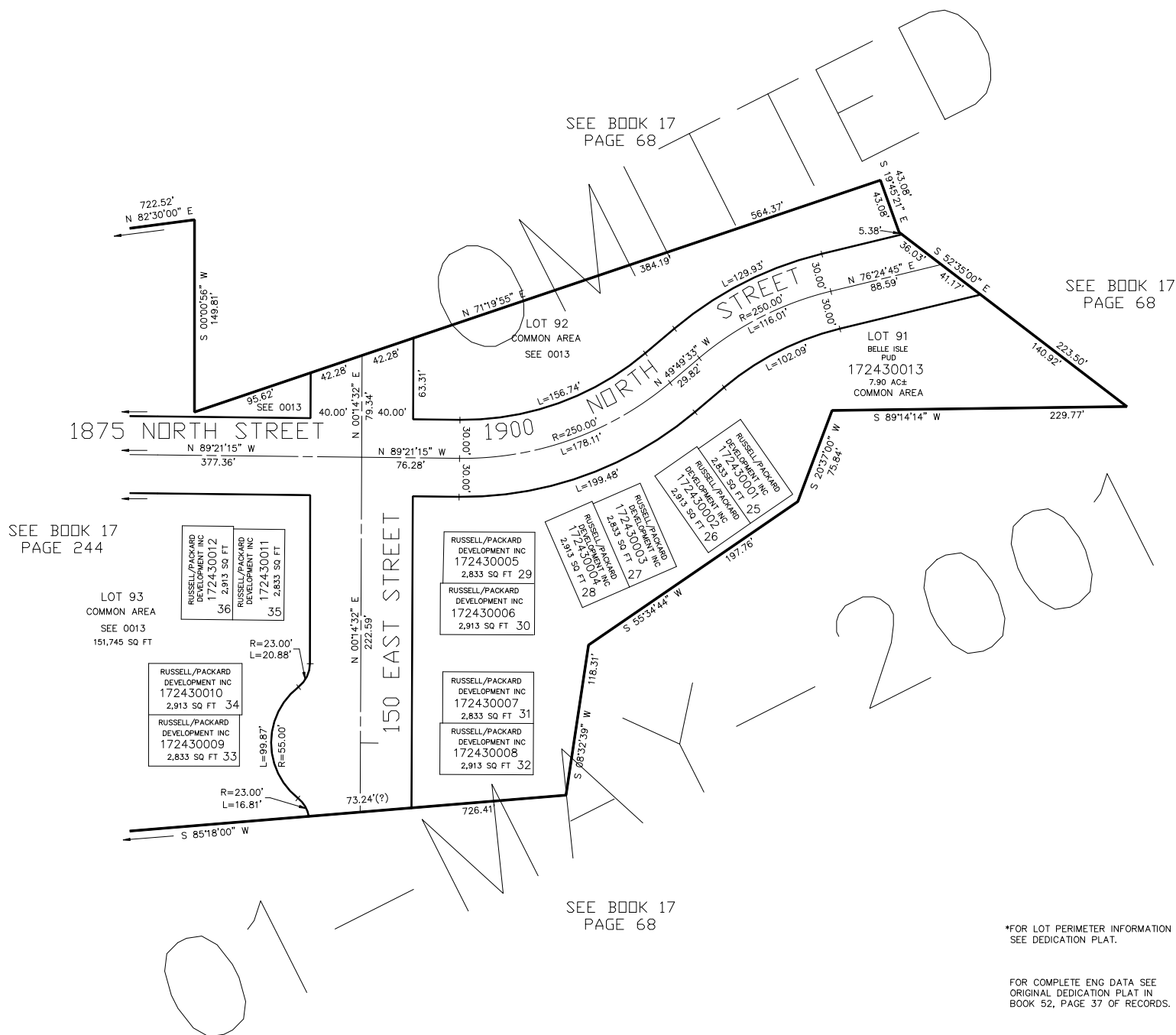


TAXING UNIT: 332

IN NORTH OGDEN CITY

SCALE 1" = 60'



*FOR LOT PERIMETER INFORMATION
SEE DEDICATION PLAT.

FOR COMPLETE ENG DATA SEE
ORIGINAL DEDICATION PLAT IN
BOOK 52, PAGE 37 OF RECORDS.